

# Applying Nature-based COastal DEfence in the Pearl River Delta: the ANCODE project

Judith Wolf <sup>\*1</sup>, Tjeerd J. Bouma <sup>2,4</sup>, Zhan Hu <sup>3</sup>, Svetlana Jevrejeva <sup>1</sup>, Michela De Dominicis <sup>1</sup>, Rosanna van Hespen <sup>2,4</sup>, Maarten Kleinhans <sup>4</sup>, Klaas Timmermans <sup>2,4</sup>, Tom Ysebaert <sup>2,4</sup>, Peng Yao <sup>3</sup>, Chen Wang <sup>5</sup>, Ming Li <sup>6</sup>, Peng Zheng <sup>6</sup>



<sup>1</sup>National Oceanography Centre (NOC), UK

<sup>2</sup>Royal Netherlands Institute for Sea Research (NIOZ), Netherlands

<sup>3</sup>Sun Yat-sen University (SYSU), China

<sup>4</sup>University of Utrecht, Netherlands

<sup>5</sup>Satellite Environment Centre, China

<sup>6</sup>University of Liverpool, UK



## Introduction

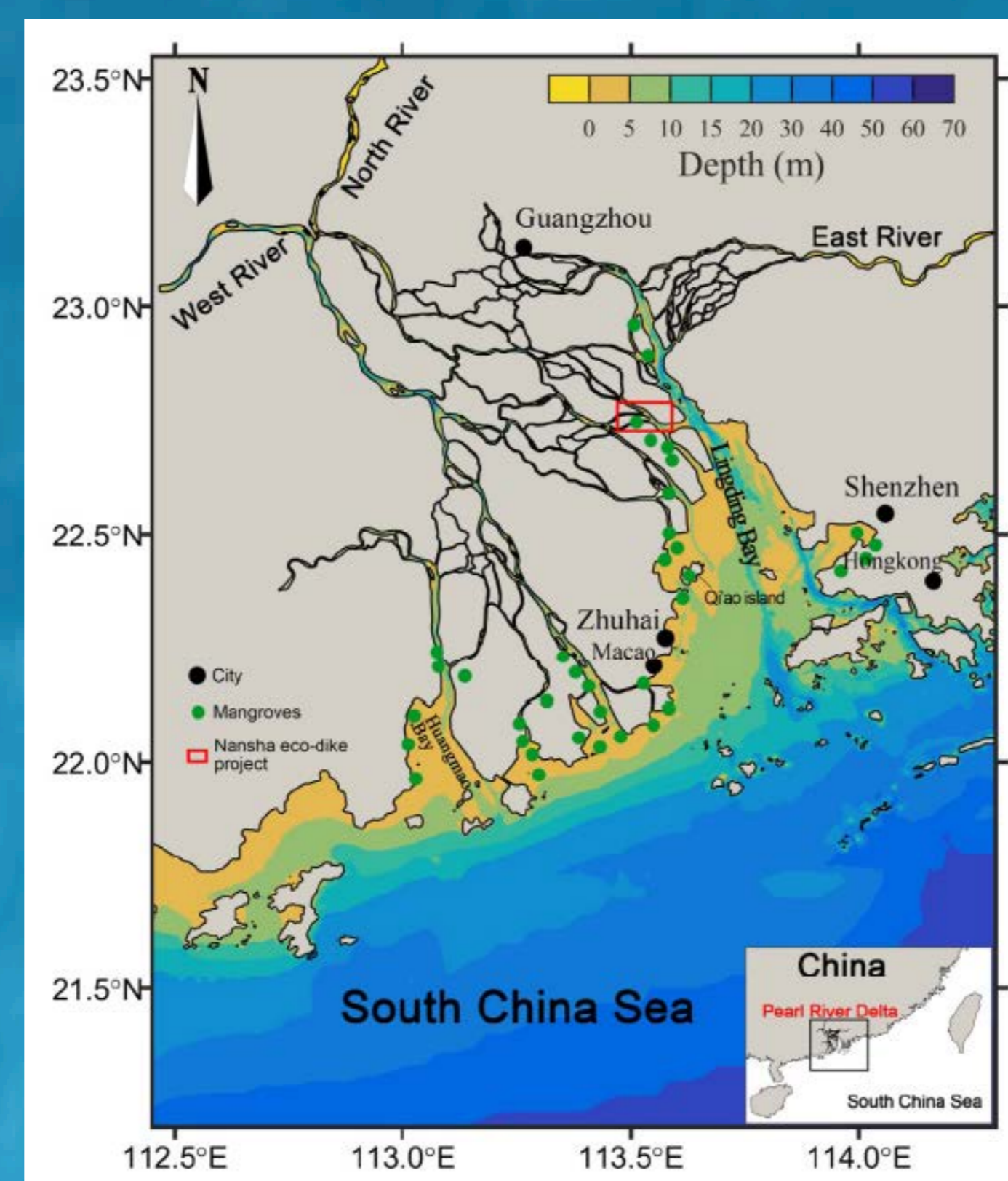
Coastal cities worldwide are at increasing risk of coastal flooding due to increasing populations and assets as well as sea level rise and subsidence. The estimated average annual losses (AAL) were US\$6 billion in 2005, and this figure is expected to grow by a factor of 10 up to 2050<sup>1</sup>, assuming continuing improvement of existing sea defences (if existing defences are not upgraded the estimated annual losses could exceed US\$1trn). Guangzhou, in the Pearl River Delta (PRD) in China, is the city most at risk globally and may be exposed to increased flooding due to more extreme winds, rising water levels and waves associated with typhoons.

Nature-based coastal defence solutions are recognised as more sustainable alternatives or additions to conventional hard engineering approaches<sup>2</sup>. In tropical and sub-tropical regions, these may include using mangroves and oyster reefs as a buffer zone, which can attenuate waves and trap sediment.

There are challenges in the implementation of such schemes and many attempts to re-establish mangroves have failed, because the plantation may be exposed to inundation and other stresses such as waves, lack of sediment or inappropriate conditions such as salinity. A useful approach for identifying periods when mangroves may be established involves identifying Windows of Opportunity (WoO) when conditions are favourable<sup>3</sup>.



The Zhu Jiang (Pearl River) basin including its 3 tributaries (West, North and East rivers)

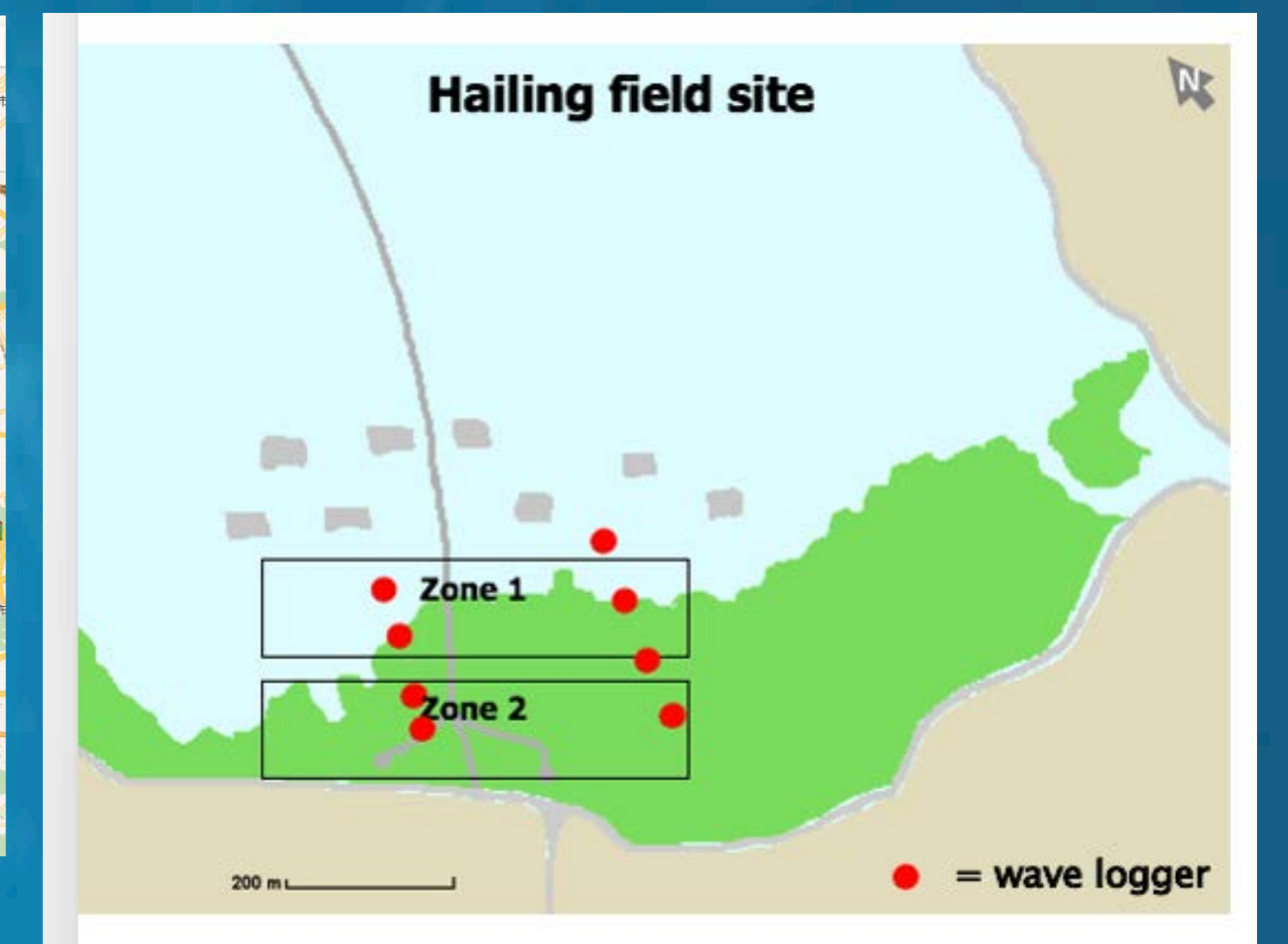
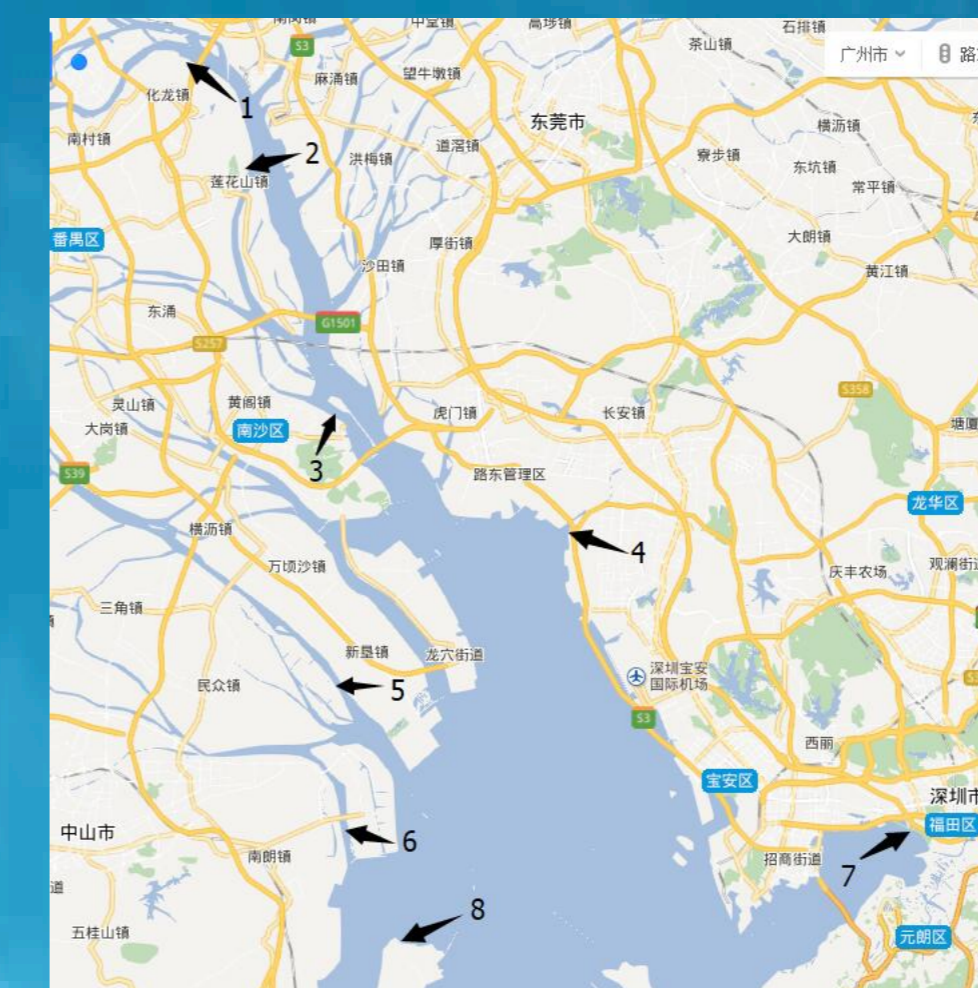


## Establishment of Mangroves and Oyster Reefs

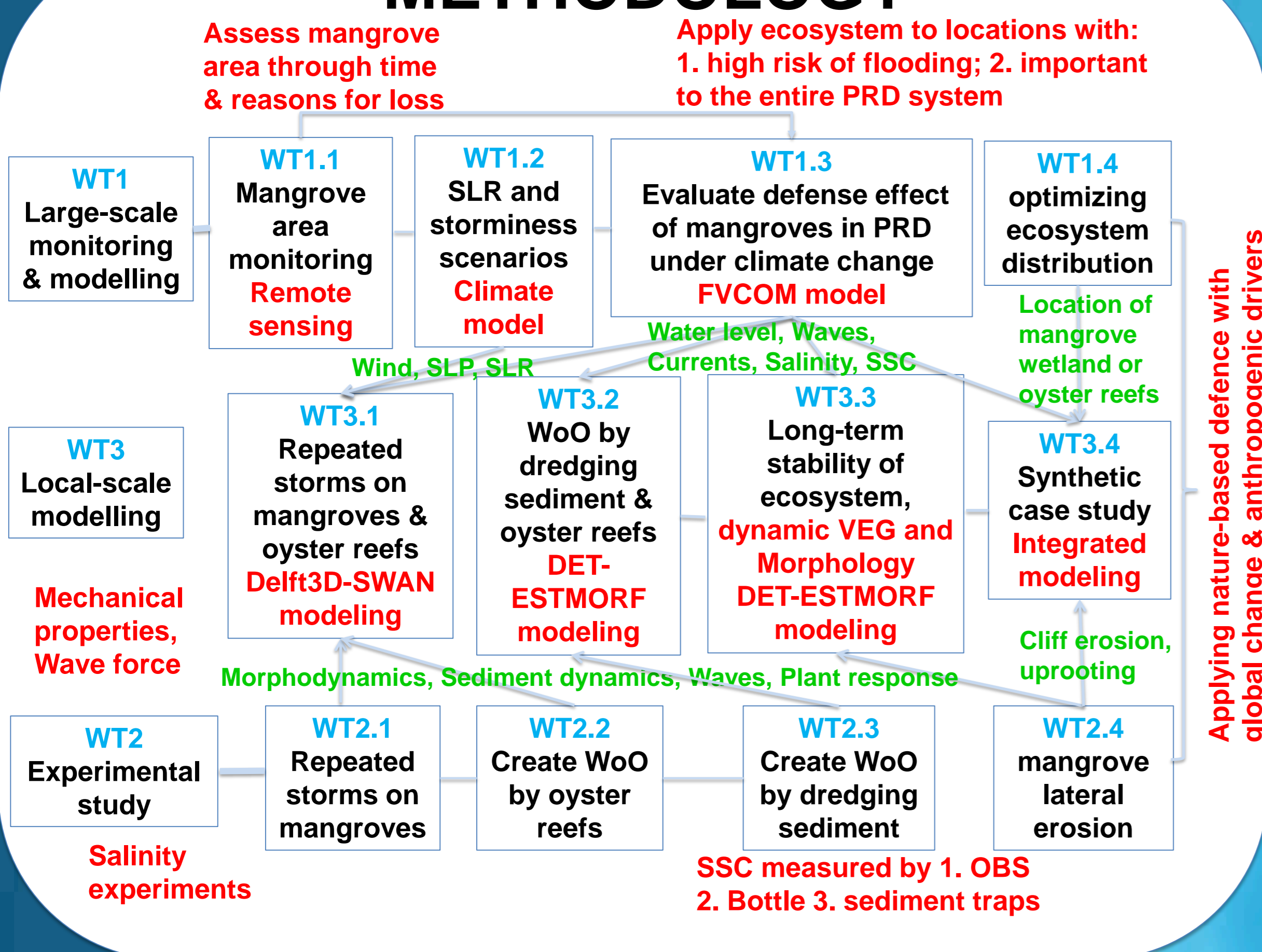
Key questions (for effectiveness & resilience) :

- How wide should the nature-based coastal defence be?
  - vegetation patch scale → wave attenuating capacity affected by repeated storms
  - tidal flat scale → long-term stability of the ecosystem (lateral expansion and retreat)
  - Delta scale → Optimizing ecosystem sizes on a delta-scale (where should we put natural defences?)
- How to create the ecosystems where they are needed?
  - First measure → integrating nature-based coastal defence with reclamations
  - Second measure → use dredged sediment to create Windows of Opportunity (WoO)
  - Third measure → build oyster reefs in front of mangroves for WoO

## Fieldwork in PRD and Hailing Island



## METHODOLOGY



## The ANCODE project:

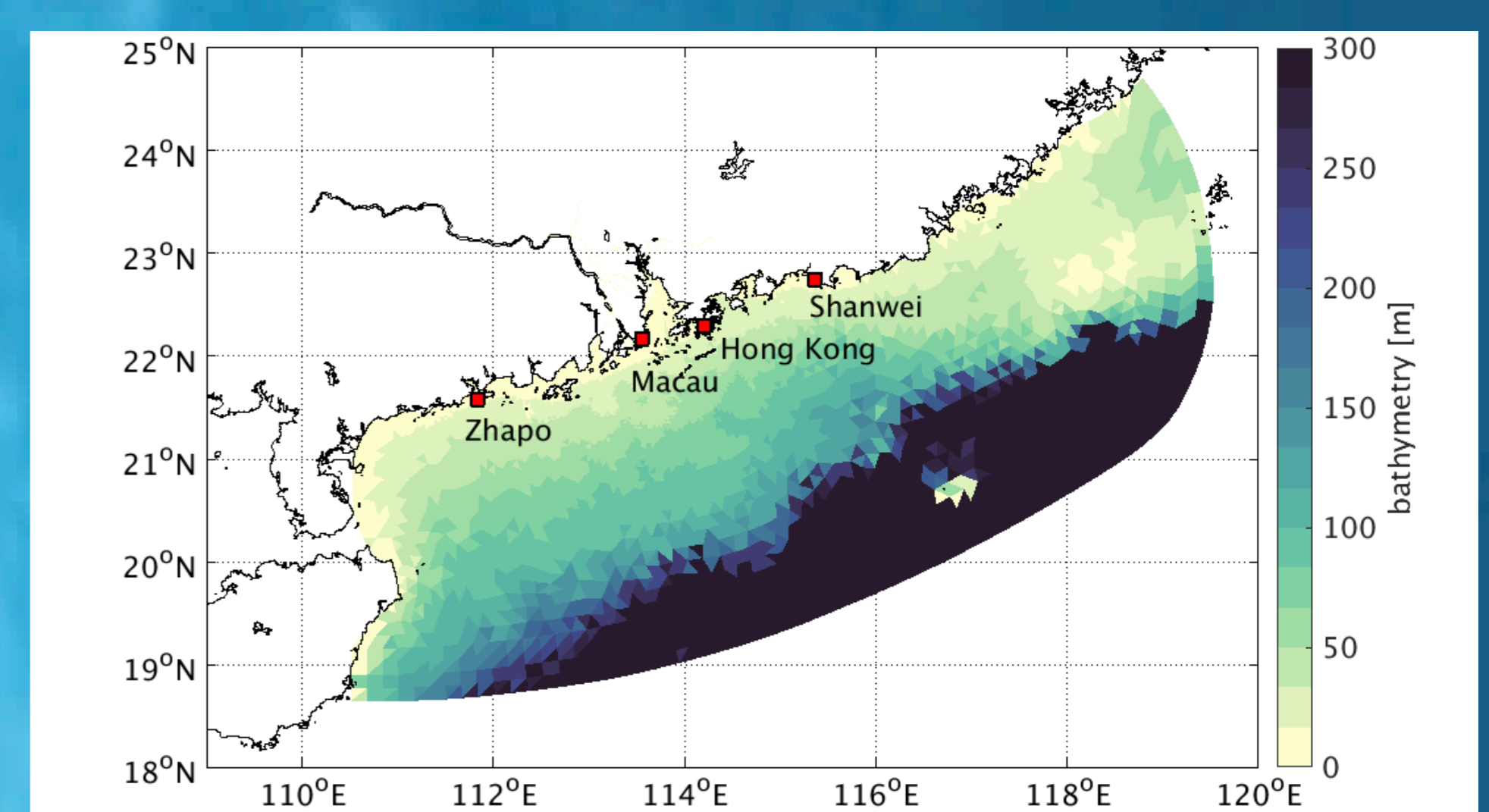
aims to develop:

- new process-based understanding
- predictive models of ecosystem size requirements

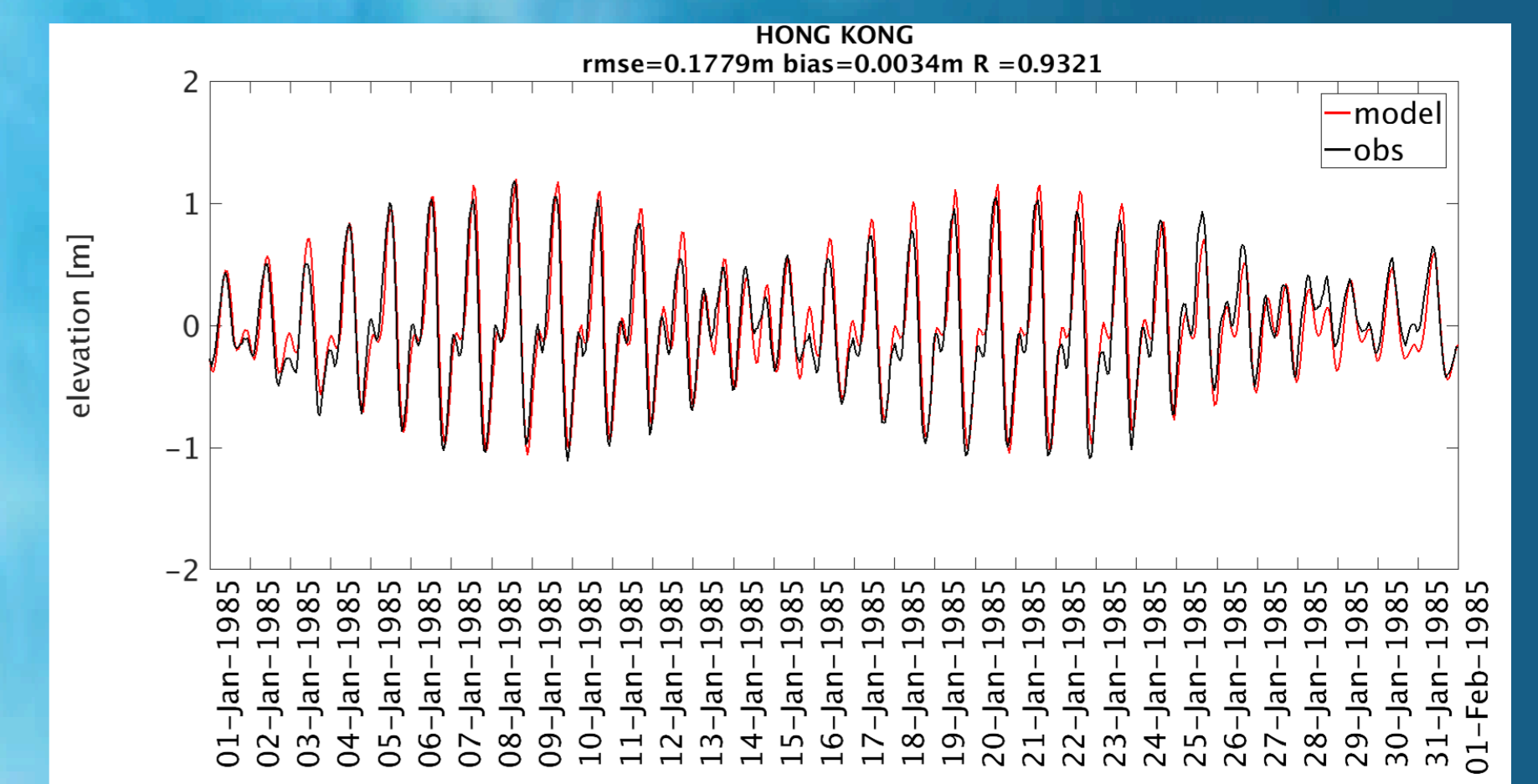
by using field experiments, remote sensing and numerical modelling in the PRD and the coastline of the South China Sea.

- WT1: Delta-scale mangrove area monitoring by remote sensing and modelling of the delta and adjacent South China Sea
- WT2: Experiments using novel methods to study mangrove resilience in PRD and Hailing Island, as well as testing WoO creation using dredged sediment and oyster reefs
- WT3: Local-scale modelling using high-resolution dynamic and equilibrium models to examine the vegetation patch and tidal flat scale
- We will interact with stakeholders to address resilient urban planning and management, to provide opportunities for nature as part of the urban development process.

## FVCOM Modelling



The FVCOM model uses an unstructured triangular grid which allows good coastal resolution while not requiring high resolution everywhere<sup>4</sup>.



Tidal validation



## Acknowledgements:

This work has been funded by the EPSRC in UK, the NWO in Netherlands and NSFC in China

\*Contact for more information: jaw@noc.ac.uk

## References

- Hallegrae, S. et al. (2013) Future flood losses in major coastal cities. *Nature Climate Change*, 3, 802–806.
- Temmerman, S. et al. (2013) Ecosystem-based coastal defence in the face of global change. *Nature* 504, 79–83.
- Hu, Z. et al. (2015) Windows of opportunity for salt marsh vegetation establishment on bare tidal flats: The importance of temporal and spatial variability in hydrodynamic forcing. *J. Geophys. Res. G Biogeosciences*, 120, 1450–1469.
- Chen, C. et al. (2003) An Unstructured Grid, Finite-Volume, Three-Dimensional, Primitive Equations Ocean Model: Application to Coastal Ocean and Estuaries. *Journal of Atmospheric and Oceanic Technology*, 20, 159–186.